

SECOND SUNDAY IN ORDINARY

TIME

ST. MATTHEW CATHOLIC CHURCH

INTROIT

Ant. Omnis terra adoret te, Deus, et psallat tibi, psalmum dicat nomini tuo,

Domine.

Ant. All the earth shall adore thee, O God, and shall sing unto thee, shall sing a psalm unto thy name, O LORD.

V. Ps 65(66)

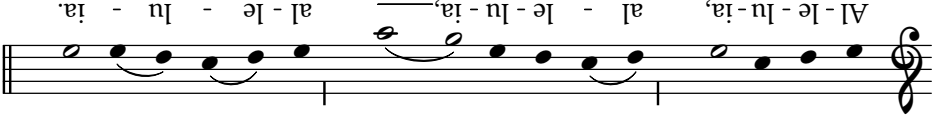
KYRIE

See *Music Issue*, #855.

GLORIA

See *Music Issue*, #856.

ALLELUIA



V. Laudate Deum omnes angeli eius: laudate eum omnes virtutes eius.

V. Praise God, all his angels: praise him, all his powers.

OFFERTORY

Ant. Iubilare Deo in voce exultationis.

gladness.

Ant. Shout unto God with a voice of

V. Ps 46(47)

SANCTUS

See *Music Issue*, #857.

MEMORIAL ACCLAMATION

Cantor All

Mor-tem tu - am an-nun-ti - á-mus, Dó - mi-ne,
et tu - am re-surrec-ti - ónem con-fi - té - mur, do - nec_ vé - ni - as.

The musical notation consists of two staves of Gregorian chant. The first staff is labeled 'Cantor' and the second 'All'. The lyrics are written below the notes. The melody is a simple, rhythmic line with some phrasing slurs and a fermata over the word 'Dó'.

AGNUS DEI

See *Music Issue*, #861.

COMMUNION

Ant. Dicit Dominus: Implete hydrias aqua et ferte architriclino. Cum gustasset architriclinus aquam vinum factam, dicit sponso: Servasti vinum bonum usque adhuc. Hoc signum fecit Iesus primum coram discipulis suis.

Ant. *The LORD said: fill the jars with water and bring them to the master of the feast. When the master of the feast had tasted the water which had become wine, he said to the bridegroom: "You have saved the good wine until now." This was the first sign Jesus performed before his disciples.*

Vv. Ps 65(66)

COMMUNION MEDITATION

Adoro te devote

Music Issue, #408

RECESSIONAL

Al - ma Redemptoris Mater, quae pervi-a caeli porta manes,
et stel-la maris, suc-cur-re caden-ti, sur-ge-re qui cu rat, po-pu-lo:
tu quae genu-i-sti, na-tu-ra mirante, tuum sanctum ge-ni-to - rem,
Vir-go pri-us ac post-e - ri - us, Ga-bri - e - lis ab o - re
su-mens il - lud A - ve, pec-ca - to - rum_ mi-se - re - re.

The musical notation consists of five staves of Gregorian chant. The lyrics are written below the notes. The melody is a simple, rhythmic line with some phrasing slurs and a fermata over the word 'rem'.

The Sts. Gregory and Romanos Guild is a Gregorian chant choir serving the parishes of the Champaign Vicariate. Membership is open to anyone who wishes to sing with us; practices are held at Holy Cross in Champaign every Monday at 7 PM. For more information, visit our website at

<http://www.schola-champaign.net/> or contact Nicholas Haggin at (217) 722-2840 or director@schola-champaign.net.