

# TWENTY-FOURTH SUNDAY IN ORDINARY TIME

## ST. MATTHEW CATHOLIC CHURCH

### INTROIT

Ant. Qui habitas in caelis, miserere nobis.

*Ant. Thou who dwellest in the heavens, have mercy upon us.*

V. Ad te levavi oculos meos, qui habitas in caelis.

*V. To thee do I lift up mine eyes, thou who dwellest in the heavens.*

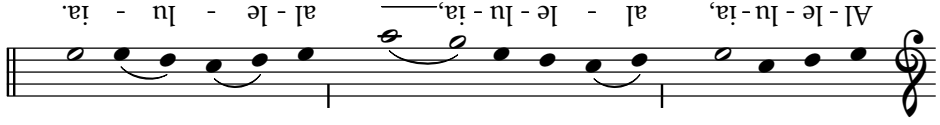
### KYRIE

See Music Issue, #857.

### GLORIA

See Music Issue, #858.

### ALLELUIA



V. Timebunt gentes nomen tuum, Domine: et omnes reges terrae gloriam tuam. *The peoples fear thy name, O LORD: and all the kings of the Earth fear thy glory.*

### RECESSIONAL



Sal-ve, Re-gi-na, ma-ter mi-se-ri-cor-di-ae, vi-ta, dul-ce - do,

et spes nostra, sal - ve. Ad te clamamus, ex-su-les fi - li - i Hevae;

ad te sus-pi-ramus, gemen-tes et fen-tes in hac la-cri-ma-rum val-le.

E - ia er-go, Ad-vo-ca-ta nostra, il - los tu-os mi-se-ri-cor-des o - cu - los

ad nos con-ver - te. Et Je - sum, be-ne-dictum fructum ventris tu - i,

no-bis post hoc ex - si - li-um o - sten - de. O - cle - mens,

O - pi - a, dul - cis Virgo Mari - a.

The Sts. Gregory and Romanos Guild is a Gregorian chant choir serving the parishes of the Champaign Vicariate. Membership is open to anyone who wishes to sing with us; practices are held at Holy Cross in Champaign every Monday at 7 PM. For more information, visit our website at <http://www.schola-champaign.net/> or contact Nicholas Haggin at (217) 722-2840 or [director@schola-champaign.net](mailto:director@schola-champaign.net).

### OFFERTORY

Iesu dulcis memoria  
 Dans vera cordis gaudia,  
 Sed super mel et omnia  
 Eius dulcis praesentia.

Nil canitur suavius,  
 Nil auditur iucundius,  
 Nil cogitatur dulcius,

The sweet thought of Jesus  
 Gives true joys of the heart,  
 But above honey and all else  
 Is his sweet presence.

Nothing is sung more amiably,  
 Nothing is heard more gladly,  
 Nothing is thought more sweetly

Quam Iesus Dei Fílius.

*Than Jesus, the Son of God.*

Iesu, spes pæniténtibus,  
Quam pius es peténtibus,  
Quam bonus te quæréntibus,  
Sed quid inveniéntibus?

*Jesus, hope to the penitent,  
How kind thou art to them that call  
upon thee,  
How good to them that seek thee,  
But what to them that find thee?*

Nec lingua valet dícere,  
Nec líttera exprímere,  
Expértus potest crédere  
Quid sit Iesum díligere.

*Tongue cannot rightly speak of it,  
Nor letters tell of it,  
Only he who has felt it may believe  
What it is to love Jesus.*

Sis, Iesu, nostrum gáudium,  
Qui es futúrus præmium,  
Sit nostra in te glória  
Per cuncta semper sáecula. Amen.

*O Jesus, be thou our joy,  
Who art our future prize,  
Be our glory in thee  
For all ages forever. Amen.*

## COMMUNION

**Ant.** Qui vult veníre post me, ábneget  
semetípsum: et tollat crucem suam, et  
sequátur me.

**Ant.** *He who would come after me must  
deny his very self, and take up his cross,  
and follow me.*

Vv. Ps 33(34)

## COMMUNION MEDITATION

*Adoro te devote*

Music Issue, #408

## SANCTUS

See *Music Issue*, #859.

## MEMORIAL ACCLAMATION

Musical notation for the Memorial Acclamation. The notation is on a single staff with a treble clef. It is divided into two parts: 'Cantor' and 'All'. The lyrics are: Mor-tem tu - am an-nun-ti - á-mus, Dó - mi - ne, et tu - am res-surrec-ti - ónem con-fi - té - mur, do - nec\_vé-ni - as.

## AGNUS DEI

See *Music Issue*, #862.